



Sibley County Historical Society *Newsletter*

March 2018

Henderson, Minnesota 56044
Ph: (507)248-3434

YOUR PRESENCE IS REQUESTED AT THE SIBLEY COUNTY HISTORICAL SOCIETY ANNUAL MEETING

Sunday, April 15, Hahn Dining & Lounge, Winthrop, MN
Dinner will begin at 12 Noon.

Please send a check to SCHS Treasurer, Rich Nagel at P O Box 206,
Arlington, MN 55307, by April 9 to make your reservation.

Dinner reservations are \$15.00 per person and will include:
Fried chicken, glazed ham balls, mashed potatoes and gravy, glazed
carrots, fruit salad, rolls and beverage.

Then we will enjoy a presentation from well-known WW I Historian,
Doug Bekke. You can read all about him on the last page of this
newsletter. You won't want to miss it!

See new board member candidates on page 10.

In this issue:

	Page
Annual Meeting Invitation	
1 St Paul's United Church, Henderson	2
-5 New Executive Director	
6 Volunteer—Arlene Busse	6
Holiday Event pictures & recipes	7-8
Research Room Upgrade	9
Sibley County Events	10
Museum Visitor	10
New Website Address	10
Election of SCHS Bd of Directors	10
New & Renewed member	11
Thank You, Donations, Memorials	11
Membership Form	11
Annual Meeting Speaker, WW I	12
Historian, Doug Bekke	

Upcoming Events

Sunday, April 15 12:00 NOON ANNUAL MEETING

Note: Location has changed from recent years.
This year it will be held at Hahn's Dining and Lounge,
downtown Winthrop.

**Memorial Day, May 28th, 2 to 5 p m will be opening
day for our 2018 Season. Our World War I display at
the museum will be ready for viewing on Memorial
Day and Sunday afternoons for the rest of the year.
Our display specialists have done an excellent job of
getting it set up and we even have several displays in
county libraries throughout Sibley county. CHECK
THEM OUT!!**

**Visit us Memorial Day and Sunday
afternoons (2-5 p m) from May through October.**

Information for this article has been extracted from church history, found in *St. Paul's 150th Anniversary commemorative calendar*, with special thanks to Ruth Ann Buck & Arlene Busse, members of the History Celebration Committee.

St Paul's United Church of Christ Henderson



This picture taken in 1987 shows the Manse, church and new Education Unit

By 1854, the community of Henderson, which was founded in 1852, was populated by immigrants from eastern states and many European countries. Several other churches had been established, but none which felt "like home" to those coming from German speaking Lutheran and Evangelical congregates in many parts of Europe. They brought with them a variety of family customs and traditions, not the least of which was their faith, religion, and free spirit.

A few like minded families had been meeting in homes, until during the years 1866-1868 when money collection began for building a church.

The first set of rules to serve as a constitution was dated and signed April 13, 1868. The name was to be the *Evangelical Congregation of St. Paul's Church*. The church was to be bound by no denomination or creed. A pastor would be

called with one of the stipulations being that he should not run down or condemn other faiths.

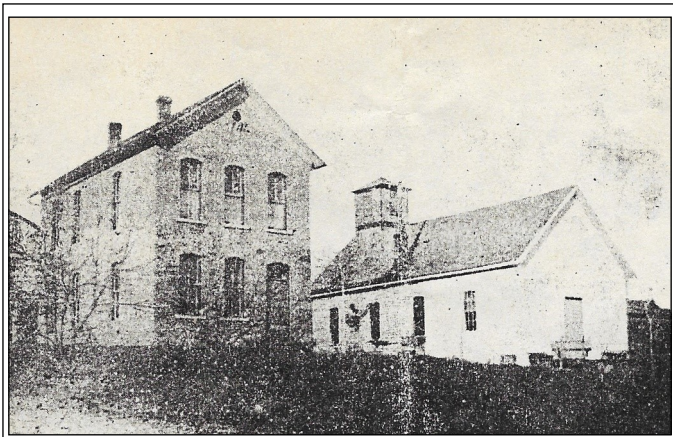
Supply clergy served the congregation for several years, living in the brick combination manse and school built in 1880 at the south side of the church (shown on next page). The present parsonage was built in 1917 on the same site.

A small frame church had been constructed on the site of the present brick edifice and the Rev. Ernst A. G. Fachtmann was called as the first pastor. He and his wife lived in their own home on the hillside above North Eighth Street until his death in 1877. He is buried in Brown Cemetery.

The congregation continued to grow with called pastors in residence. The community's perception and comments in the *Henderson Independent* seemed to indicate that St. Paul's was considered to be a Lutheran Church, despite its name and constitution.

(Continued on next page)

(continued from previous page)



First church and parsonage

In 1905, after 37 years of use, the old church was removed, and construction began on a much larger brick structure. The church was completed and a dedication service was held January 14, 1906. English services were held on Sunday evenings.



New church built in 1905.

A new constitution was written in both German and English in 1936, and the church became a member of the new Evangelical and Reformed denomination. Gradually the use of German was discontinued.

In 1956 the educational wing was added, and the church chancel enlarged. St. Paul's became a member of the newly formed United Church of Christ in 1957. This was the result of several denominations and synods merging.

In 1968 the 100th anniversary was celebrated.

Tower bells and chimes were installed in 1969. They can be heard at Noon and 6 p.m. (Ed. Note: At the museum we enjoy hearing them when we are out on the porch.)

In 1983 co-pastors Jo and Kevin Cassidy-Maloney were called. Jo was the first ordained woman to serve at St. Paul's; others would follow, serving as interims or as called pastors.

A major improvement in handicap accessibility was completed in 2005 with a wheelchair lift and a new restroom installed.

Sunday school, youth activities, men's and women's organizations and activities, and mission support have been important through the years in the life of the congregation.

Food service is part of the life of the congregation with membership potlucks, brunches and soup luncheons open to the public. Ecumenical activities such as Community Thanksgiving services and Sibley County Food Share support also continue. The Henderson Area Food Share is a recent service addition. Fresh produce and foods not available at area food shelves supplement food needs of many individuals and families. St. Paul's current pastor, the Rev. Deb Meyer provided leadership in making this outreach ministry successful.

Vacation Bible School at St Paul's is open to all children from the community and is well attended.

Pastor Deb Meyer and her husband, Rev. Kent Meyer, live in the parsonage in Henderson. They have a son, Mark, who lives in Washington DC and a daughter, Serenity, who lives in St. Paul. Rev. Kent Meyer, PhD is the Senior Pastor at Zion's United Church of Christ in Le Sueur.

The 150th Anniversary year of the church is being recognized at St. Paul's in 2018 with various congregational activities which will culminate with a day of worship and celebration. Save the date post cards have been sent to former members for whom addresses could be found.

One of the recent special congregational activities was the German Heritage Service on Sunday, March 11th. Rev Kent Meyer, who is

fluent in German, conducted this service in the style of the German Evangelical (*Evangelische*) service of the mid-1800.

The women of the congregation were invited to wear hats



(Continued on next page)

(Continued from previous page)

of the style of that era. As in the past, women and children were seated on the right side, men and confirmed boys in the pews on the left. The bulletin for the day had Bible readings with each part of the liturgy in German with an English translation. The offering was received using *Klingenbuetel* (translated by former Pastor Walter Fischer, as "ringing sack"). Ushers long ago used long poles with red velvet bags to reach each person in the pews. "Ringing" hints at coins being dropped in the bag.

A display of church memorabilia has been arranged in the social hall for members and visitors to view. Photos can be seen of all past confirmation classes.

The annual Spring Brunch will be held April 15 from 9 to 1. It is open to the public. This will be the 33rd year that this event has taken place.

Anniversary activities will culminate May 20th with a day of worship and celebration.

Pictures: Right, top: Church ladies peel and shredding potatoes for the brunch.

Right: Lisa Von Lehe, one of the grill-masters in charge of hash browns and breakfast sausages for the brunch that are prepared on the grill.



T
H
E
E
A
S
T
E
R
T
R
E
E



Parishioners are invited to come forward to put flowers on the Easter Cross.



Women's Guild members preparing for Guest Day!



We color Valentine cards and add a candy treat and give them to area nursing and assisted living homes. We have done this for six years and give out about 360 Valentines.



The Mitten Tree is put up in November and members bring mittens, caps and scarves. The Sunday School children collect the items and hang them on the tree. They are taken to Sibley County Social Services to be used for gifts for children of Sibley County.



Members of the congregation get ready to hand out bottled water to visitors during Sauerkraut Days Parade.

Meet our new Executive Director Amy Newsom

Amy Newsom is the part-time Executive Director for the Sibley County Historical Society and assumes this role as part of her position as Sibley County Community Development Director. Amy is originally from Green Isle Township. She has a Masters Degree in Public Administration from Minnesota State University, Mankato, and a Bachelor of Science Degree in Political Science with a Minor in U S History from North Dakota State University. Amy is married to Mark Newsom from Cameron, MO. They have 2 daughters, Maggie & Erin.

Amy oversees the museum archives and programs, manages the accession of items donated to the museum, manages the volunteer personnel, markets the Sibley County Historical Society, writes grants for the Society and coordinates the fundraising efforts.

You can contact Amy at: AmyN@co.sibley.mn.us



New Series —SCHS Volunteers



It's pretty much a given that Arlene Busse is the longest serving and most knowledgeable volunteer at the museum, so she becomes the focus of our first article in this new series about our volunteers. We could not have a museum of this quality without our many great volunteers and we hope to show our appreciation to each of them.

If you are a visitor just passing through town and happen to see all the cars at the museum and decide to see if you can get a tour, you will want to hope that Arlene is working that day (she usually is) as she is always happy to show people around the museum and share her knowledge of the museum, Sibley County and the people that have lived here.

Many of our volunteers are natives of Sibley County, but not Arlene, who comes to us from North Dakota. However, she's been a member of the SCHS family for over 40 years, dating back to the time when she lived in Gaylord and the *Sibley County Historical Society* was just

beginning. Her husband Robert "Bob" Busse, was the Sibley County Clerk of Court for many years and a native of Henderson. Arlene served as Sibley County's Public Health Nurse as well as holding other nursing positions in Sibley and surrounding counties.

Among the many hats she wears around the museum and in Henderson, are: Vice-president of the SCHS Board of Directors, member of the Research and Accessions Committees at the museum. She is one of the volunteers that prepares our museum displays, is a past-president and director of the Joseph R Brown Interpretive Center; she has taken over the job of feeding the Hummingbirds and plans the Hummingbird Hurrah. She has been very supportive of the Heritage Day celebration, providing ideas, narratives and costumes for this event. She was also very much involved in the Henderson Walking/Driving Tour Book recently published. If there's a job to be done, Arlene will be there.

Arlene played a vital role in the creation of both the *Gaylord History Book* and the *Henderson, Then and Now* book. She also helped compile the history portion of the "Remembering Country Schools of Sibley County" book.

While Arlene cared for her husband, Bob, in his last years, she hardly missed a beat when it came to completing projects she was committed to. That dedication includes the activities of General Federation of Women's Clubs which she belongs to. She's a good cook and also likes to bake. The GFWC considered the Busse Home our Club House. Since she could not leave Bob alone in the evenings, she invited us to meet there so she could be part of the meeting and programs.

We sincerely hope she will be working at the museum for many more years; we're convinced we could not get along without her.



Entertainers: Deb Wiprud & Joy Berg

2018 Holiday Event with a Scandinavian Flair



Hostesses: Roseann Nagel, Maxine Rickard,
Miana Nagel



Betty Rud "queen of Lefse"
shares her recipe

Sandbakkels Maxine Rickard

1 lb butter (DO NOT SUBSTITUTE)

1 cup granulated sugar 1 egg

4 or 5 cups flour

Mix sugar, butter and the beaten egg. Last flour and seasoning. Ground cardamom seed, or almond or vanilla flavoring - or - divide the dough into three parts and flavor differently.

Sandbakkels are to be baked in forms or molds.

Bake at 350° for 20 minutes (until a little brown)

Lefse

4 c. riced potatoes (white are preferred)

3 T. butter 2 T. sugar

1 1/2 tsp. salt

1 c. whipping cream

1 1/2 c. flour

Combine all but flour when potatoes are still hot. Let cool thoroughly (overnight) and add flour just before frying on 400° grill.



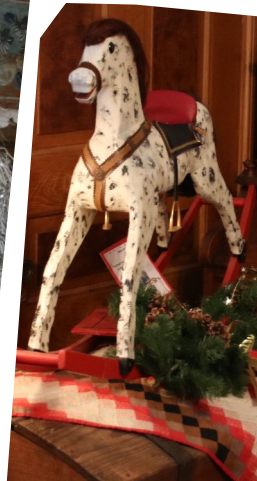


M
O
R
E



HOLIDAY

D
E
C
O
R
A
T
I
O
N
S



Upgrade of Research Room

Special thanks to Donna Meyer of Houston, TX, for providing the funds to upgrade the Research Room. As you will see, this small room has taken on a new look. We aren't all moved in yet, but now we have lots of room to spread out.



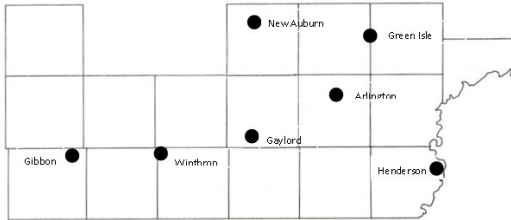
After

We have found a lot of information in various rooms and boxes around the museum that have never been integrated into the research room; it is our goal to gather all this information and have it in one location. It has been exciting to find various ways to incorporate all these items. Our first purchase was the new files which we call our "surname" files. So far we have several thousand file folders and are planning on adding many more. As shown below, the new cabinet drawers open to the top with files in alphabetical order. Our research team, Eldrene, Ruth Ann & Arlene, went through all the old files while Dorothy made new folders for each surname found. We also went through the list of Ostrom pictures and added a sheet for each family that had pictures that have been identified. Our goal is to have all information in one place for any family in these files, but it will take a lot



Thanks Krefit Cabinetry and dedicated workers, Billy Thomas, Ben Willmsen, & Sam Grochow, for a job well done. Special thanks to Lowell & Rich Nagel for all the moving of files and equipment and to Al Cole for reconnecting our computers.





Upcoming Events in Sibley County

GIBBON April 15, 11—4 Gibbon "Red"s Fest" at the Gibbon Sportsmen's Club

WINTHROP April. 6-9 Winthrop Grackle Days
April 6, 6-9 a m Game Protective League Free Breakfast

April 7 4:30-7:30 p m Winthrop Fireman's Dinner at Fire Hall

April 7, 9-3 Winthrop Museum (WHMS) open

April 8 noon to 3 WHMS Exhibit Sioux People-Dakota War

GAYLORD World War I display coming soon at the Library.

ARLINGTON April 17, 8 - 5, Senior Expo, Arlington Community Center

APRIL 19, 4-7, Sibley County Business Expo, Arlington Community Center

April 20, Social Hour 5:30 Dinner 7-8 Ridgeview Sibley Medical Foundation, Spring Fundraising, at Henderson Event Center

April 29, Arlington A's baseball Opener

Beginning May 5th The Arlington Historical Museum will be open the 1st and 3rd Saturdays of each month. Some WW I letters from soldiers will be on display with picture of encampments where Arlington soldiers served.

The Arlington Historical Society received a grant for \$1,000 from the Cable Commission which was used to purchase 2 televisions, one to announce museum & community activities, the other to show pictures of past events in Arlington.

GREEN ISLE May 13 Green Isle Irish Baseball Opener

HENDERSON

April 17th, 7 p m, Spring Garden Lecture at the Henderson Public Library.

April 28th, 6-10 pm, Chance 2 Dance Talent show at the Henderson Event Center 6-10 pm.

May 19th 7th Annual Cancer Cruise, 5K Run/Walk, Car Show and Cruise. All proceeds will be donated to Jeff Larson of Henderson.

May 22nd Start of the Classic Car Roll Ins.

MINNESOTA ALLIANCE OF LOCAL HISTORY MUSEUMS (MALHM)

SCHS volunteers and Executive Director, Amy Newsom had an opportunity to meet with MALHM Alliance Coordinator, Dustin Heckman, on Monday, March 11th.

MALHM began in 1991. It is a network of "Peers Helping Peers", formed to raise the level of professionalism in this field and advocate for local history issues in Minnesota. Our combined voices bring attention to our work and help fund our mission.

Amy Newsom & Arlene Busse gave Dustin a tour of our museum and asked for his feedback on our displays. He hopes to contact a peer group to come and tour the museum to see if they could give us some suggestions on changes we might be able to make.



It was a good opportunity to learn more about the organization and get his input on what we could do to improve our displays in the museum.

Candidates for Board Election/ re-election 2018

Election of officers will be held at our Annual Meeting, April 15th at Hahn's Dining in Winthrop

Present Officers

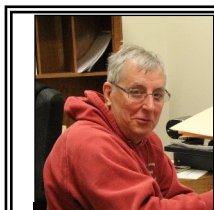
- Amy Newsom, Executive Director
- David Tesch, President, Henderson
- Arlene Busse, Vice-president, Henderson
- Ruth Ann Buck, Secretary, Arlington
- Rich Nagel, Treasurer, Arlington
- Current Board Members: Joy Cohrs, New Auburn;
- Amy Franke, Gaylord; Dale Ericson, Gibbon;
- Eldrene Ebert, Gaylord

Director and officer positions to be filled at the Annual Meeting are as follows:

Nominees

- Nominee for Vice-President, 3 year term
Vicki Stock, Arlington
- Nominee for re-election as director: 3 year term
Dale Ericson, Gibbon
- Nominee for election as Director: 3 year term
Mike Reinhardt, Henderson

Additional nominations may be made from the floor at the Annual Meeting.



New SCHS member Dan Hislop is doing a great job with our new website. Please check it out at the address below.

Our website has been changed slightly so be sure to make this change.

www.sibleycountyhistoricalsociety.com

NEW* AND RENEWED MEMBERS

*Elizabeth Vandam, Mound
 Ruben and Eldrene Ebert, Gaylord
 Harriet Troidahl, Gaylord
 *Rod & Alix Nelson, Gaylord
 *Mary Aldrich, Henderson
 Charlotte Doudell, San Jose, CA
 Jon Butler, Minneapolis
 Marjorie Johnson, Saint Peter
 Victor Gess, Lafayette, CA
 Judy Loewe, Henderson
 Kathleen Zuckerman, Minneapolis
 Roger and Lorraine Just, Henderson
 Kathleen Ringo, New Auburn
 Darlene Weckwerth, Arlington
 *Neal and Bobbie Harder, Le Sueur
 *Dan and Nancy Hislop, Arlington
 Ray and Gisela Meyer, Winthrop
 Trent and Tera Messner, Henderson
 Jeff and Amy Franke, Gaylord
 Greg and Carolyn Johnson, Winthrop
 Bruce Doepke, Chisago City
 VerJean Schindeldecker, Excelsior
 Rich and Janet Graupman, Gibbon
 Ron and Kay Klement, Gibbon
 Art and Rosetta Blomquist, Mankato
 Eric Hanson, Chesapeake, VA
 Arlene Busse, Henderson
 Vernon Ruschmeyer, Dassel
 Eunice Beneke-Rucks, Henderson
 Ruth Ann Buck, Arlington
 Marlene Moskop, Arlington
 Arden Sjogren, Bismarck, ND
 Chuck and Sharon Shimota, Arlington
 Alvin and Diane Rostberg, Henderson
 Philip Delzer, Minneapolis
 Cindy Stevens, Lake Elmo
 Mike Reinhardt, Henderson
 Raymond (Ted) Pinske, Gaylord
 Gene and LaDonna Rodewald, New Ulm
 Steve Carlson, Brooklyn Park
 Leslie and Diane Pettis, Winthrop
 Marian Pfarr-Saxton, Gaylord
 Thomas Williamson, Arlington, VA
 Susan Morrisette, Arlington
 Mary Ellen Weller, Madison, WI
 Marian L. Anderson, Gaylord

Lila Sillerud, Canby
 Lois Bode, Gibbon
 Virgil Lieske, Austin
 Mildred Doering, Edina
 Lowell Nagel, Arlington
 Edgar Taggatz, Gibbon
 Beverly Woods, Gibbon
 Davis Biebl, Gibbon
 Janet Wieman, Gaylord
 Fred Lobitz, Hamburg

**Memorials and Donations**

The Board of Directors regrettably accepts the resignation of Laura Gilman as SCHS board member. Thank you for your service.

Memorials

Leading Sponsor: (\$5,000 to \$9,999)

Mary Bakeman, in memory of Anton & Rosina Rost

Supporting Sponsor: (\$250 to \$499)

Arlene Karels, in memory of Bert Karels

Contributing Sponsor: (\$100 to \$249)

**Charles & Donna Meyer,
 in memory of Robert (Bob) Trebelhorn**

Organizational Sponsor: (\$1 to \$99)

Phil Delzer, in memory of Henry & Martha Scheer

Don & Gail Nuessmeier in memory of Bert Karels

Dorothy Peterson, in memory of Bert Karels

Glen & Judy Loewe, in memory of Bert Karels

Chuck & Sharon Shimota, in memory of Bert Karels

Don & Betty Strobel, in memory of Bert Karels

Marie Kramer, in memory of Patricia Lind

Sharon Haggenmiller, in memory of Bert Karels

Sharon Haggenmiller, in memory of Leo Anderly

Sharon Haggenmiller, memory of Addie Schouville

Sharon Haggenmiller, in memory of Verna Wolff

Arlene Busse, in memory of Betty Jane Hough Poore

Ruth Ann Buck, memory of Betty Jane Hough Poore

Dorothy Peterson, memory of Betty Jane Hough Poore

Donations

Founder Donation (\$10,000 to \$49,000)

Donna Meyer (renovation of SCHS research Room)

Contributing Sponsors (\$100 to \$249)

Henderson Township, United Fund

Henderson, United Charities

Organizational Contributor (up to \$99)

Marian Anderson

Neal & Bobbi Harder

Membership Form	
<input type="checkbox"/> New <input type="checkbox"/> Renew	
Name _____	Mail to: SCHS Treasurer
Address _____	→ P.O. Box 206
_____	Arlington, MN 55307

Zip _____	How would you like your
E-Mail _____	Newsletter delivered?
Phone _____	
<div style="border: 1px solid black; border-radius: 50%; width: 40px; height: 40px; display: flex; align-items: center; justify-content: center;"> Circle one </div>	By email <input type="checkbox"/> Color! U.S. mail <input type="checkbox"/> B&W
Individual \$20 Family \$25 Business \$50	

The museum is open to the public for tours beginning each year on Memorial Day and then Sundays from 2:00 to 5:00 pm, June thru October and by appointment. Volunteers are available help you do research, or call the museum to set an appointment to do your own research: 507 248 3434. Research on Sundays is not available except by appointment.

Check due date on the mailing label of your newsletter. Membership dues are stated at left. Membership dues should be mailed to:

**SCHS Treasurer, P O Box 206
 Arlington, MN 55307**

Annual Meeting Speaker

We are excited to have well-known World War I Historian Doug Bekke, speak at our annual meeting on Sunday, April 15.

- ♦ **Mr. Doug Bekke is a Vietnam Veteran who served with the 82nd Airborne Division and with Special Forces.**
- ♦ **He has built numerous temporary military history exhibits in various venues around Minnesota.**
- ♦ **He has served as a historian on the MN Historical Society Greatest Generation and WW I Exhibits, 1968 Exhibit and Vietnam Era project.**
- ♦ **He is a technical advisor on military uniforms for various theaters, including the Jungle Theater and the Minnesota Opera, and serves on the Advisory Board to the Minnesota Historical Society Greatest Generation and WWI exhibits.**
- ♦ **He has had a 32 year involvement with the WWII Round Table at Ft Snelling.**
- ♦ **He was the curator of the Minnesota Military Museum at Camp Ripley, MN, retiring in December of 2016.**
- ♦ **He has been a frequent explorer of WWI and WWII European battlefields.**

Our museum display this year will focus on World War I and this will be a great kickoff for our upcoming season. Please plan to join us, April 15. See reservation information on page 1.



700 Main Street
P O Box 407
Henderson, MN 56044
Phone 507 248 3434
E-mail: schsl@frontiernet.net



WE'RE ON THE WEB!

WWW.
sibleycountyhistoricalsociety.com



Like us on Facebook!