



Volume 24, Issue 1

June 2019

Upcoming Events

- *Henderson Roll-in EVERY Tuesday through October*
- *Ken Dose Concertina - July 7th*
- *Sibley County Fair -July 31-August 4th*
- *Josh Reinitz Acoustic Guitar Set—August 11th*

Museum open EVERY Sunday 2-5 PM though October

Sibley County Historical Society Newsletter

Every Piece Has A Story

The Sibley County Museum features hundreds, if not thousands, of pieces donated from all across the region. Each piece tells a story not only about its original holder, but also a more important story about its era and uses. The museum is organized in all types of ways but one of the most popular rooms seems to be the “War room” featuring hundreds of pieces and photos ranging from the

mid to late 1800s to around WW II. A piece selected to highlight is Dr. Spannaus’ uniform from WW I where he was enlisted as a veterinarian. He never saw combat across seas but served as a veterinarian at a training encampment in New Mexico.

Albert Spannaus was born at Arlington, MN to Fred and Wilhelmina Nimtzt Spannaus on Feb. 14, 1894. He



Depicted above is the actual uniform of Dr. Spannaus. Several pieces were borrowed to make his uniform complete. See full uniform picture on p.2.

Inside this issue:

<i>Blue Willow Platter</i>	2
<i>Pioneer Families</i>	3
<i>A Major Project</i>	3
<i>Meet the Research Committee</i>	4
<i>Research Happenings</i>	4
<i>Genealogical resources</i>	5
<i>Sibley County Fair</i>	5

Every Piece Has It's Story cont.

graduated from Arlington HS (1912-13) then attended veterinary school at an unknown location at this time. His draft registration card places him in practice at Waconia MN in June 1918. He was inducted into the Army July 15, 1918 and discharged on December 14, 1918. He was stationed in New Mexico. After discharge, he returned to Waconia. He was married to Hilma Lenzen of Young America MN on July 7, 1920. As child, Hilma lived on a farm in Washington Lake Township, Sibley County.

During World War II all men had to register for the draft, including those in their 40s. In 1942 his draft card listed him as 48 years old, 5' 8 1/2", 165 pounds, brown eyes and bald (in 1918 he was "medium tall"). He died June 8, 1987 and was buried in the Arlington Public Cemetery where his parents and other relatives are. Strangely,

the photo of his foot stone, found on Find a Grave, shows him as a Pvt. in the Army. His wife died in 1991 and is also buried in the Arlington Cemetery.

A little bit of background on when/why we were at war: World War I began in 1914, after the assassination of Archduke Franz Ferdinand, and lasted until 1918. During the conflict, Germany, Austria-Hungary, Bulgaria and the Ottoman Empire (the Central Powers) fought against Great Britain, France, Russia, Italy, Romania, Japan and the United States (the Allied Powers). At the outbreak of fighting in 1914, the United States remained on the sidelines of World War I for quite some time. On April 2, 1917 Woodrow Wilson appeared before Congress and called for a declaration of war against Germany.



Dr. Spannaus in full uniform in 1918. Many pieces are not included on display, but pieces have been brought together to show a full uniform..

Blue Willow Platter

Blue Willow China is delicate, classic and tells a mythical love story. The Blue Willow pattern is a blue-and-white transfer design that features a collection of engraved drawings that illustrate a Chinese fable about two lovers from different stations in life. The design usually includes a bridge with people on it, a

boat with a person in it, a willow tree, an orange or an apple tree, a fence, two birds and a tea house or pagoda. This specific piece features all described features. Different manufacturers adapted these design elements and used several distinctive borders which can also be used to help it be identified.



This blue willow platter is on display at the museum in Henderson. Donated by a resident, it is stated that have come to the U.S. from Ireland and had been in the donor's family since 1850.

Pioneer Families: Charles Frenzel Family 1864

Charles Frenzel was born in Germany and lived with his family in Missouri. He came to Arlington in 1864 and purchased about 160 acres of land on the Southern edge of Arlington in 1872. Charles and his wife Sophia, had six children, sadly only two of whom reached adulthood. The family farm was passed on to his son Ed and then onto

his children. The original family homestead was a farm for over 100 years and then the land was donated by Martha Frenzel to the Arlington Municipal Hospital and St. Paul Evangelical Lutheran Church. She made a request that part of the land be used as a park. A monument stands today recognizing her gift to the school. Other portions of

the land have been sold for development as well as some residential development.



A Major Project is Underway

Starting in February a major project began at the Sibley County Historical Society. A team has documented and cataloged over 6,500 objects. It is expected that by the end of their two-year project they will have cataloged over 20,000 3-D items in the museum. This project is funded by

a nearly \$100,000 grant from the Minnesota Historical Society. There are items in the basement, main floors of the museum as well as multiple rooms upstairs and a very large attic. Each item is being added to a spreadsheet to be used for future reference to quickly locate an item in the Museum's possession.



Luke Koran (front) and Todd Sasse add items to the museum's catalog.

SCCH Welcomes New President on Board of Directors

Jeff DuCharme is the new President on the Board of Directors. He holds a Bachelor of Arts degree from Chapman University in California where his interest in the humanities instigated a career in banking. Mr. DuCharme's keen interest in the arts has inspired his involvement in an array of arts organizations for which he has spearheaded successful fundraising campaigns.



Mission Statement

The objective of the Historical Society shall be the collection, preservation and dissemination of knowledge about the history of Sibley County and to relate it to the history of Minnesota.

Membership Fees

\$20 per year—single
\$25 per year—family

Board of Directors

- Jeff DuCharme, President
- Vicki Stock, Vice President
- Rich Nagel, Treasurer
- Eldrene Ebert
- Joy Cohrs
- Michael Reinhardt
- Wendy Evenson
- Karen Klenk

Executive Director

Amy Newsom

Museum Hours

The museum opens on Memorial Day and continues Sundays 2:00—5:00 PM

Admission

Members are admitted free, Non-member cost is \$5 per person. 12 and under free.

Meet Your Research Committee!

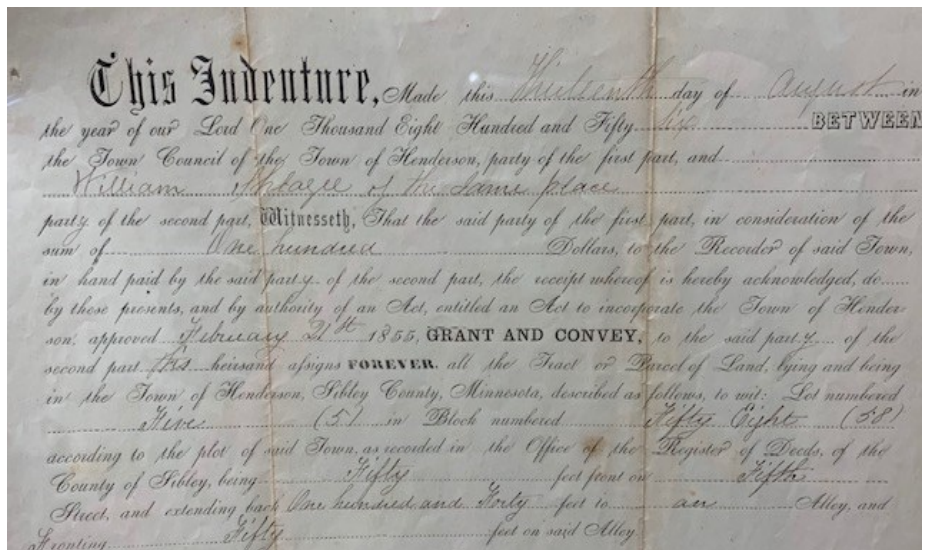
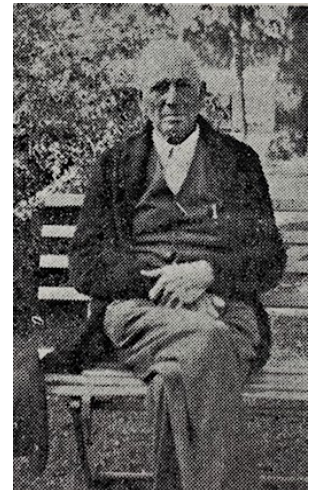
They are here for you convenience! Together the ladies have been volunteering at the museum for a combined 65 years. They primarily assist in genealogical research as well as gathering any documents or artifacts you may need. These wonderful ladies welcome visitors on Thursdays, as well as by appointment when requested in advance. They have access to ancestry files as well as catalogs dating back to early settlers.



Eldrene Ebert, Ruth Ann Buck and Arlene Busse

Research Happenings

The museum has one of the oldest documents in the entire county! This item is a deed for the Herrman family of Henderson. It dates back to 1858 and is the ORIGINAL copy, it would have been brought to the County Recorder's office for hand copying into a permanent record. They are unable to locate the original copy due to Books A & B being destroyed in a fire. In case you did not know the county recorder's office has copies of all deeds, birth and death certificates as well as marriages licenses from the County on file! Leopold Hermann was born in 1862 and lived in Henderson his entire life. He had 4 children.



Genealogical Resources!

Genealogy is one of the fastest growing hobbies in the country! We are so very fortunate that our new office addition allows for us to better serve those who are seeking genealogy information. We have volunteers who will do research.

An appointment can be made for a volunteer to be available to assist you.

The fee for this service is \$5.00 per hour plus \$.50 per copy of requested material.

Genealogy requests must be made by calling the Museum and leaving a message. If there is no answer, leave a message including your name and phone number and a

volunteer will call you back. You may also send your request via email to: historicalsociety@co.sibley.mn.us.



Call to schedule an appointment today! 507-248-3434

Come See Us at the Sibley County Fair July 31– August 4!

Sibley County Historical Society will be at the County Fair. You can find us at our building pictured below! Look for our banner across the front, we are near the entrance to the fair at the main gate next to the Herit-



age building.

Come and meet many of our wonderful volunteers and tour guides. We will have many items on display from the museum and much more. This year we hope to highlight Dr. Spannaus' uniform from WW I and possibly have items from the Frenzel family as well! There will also be several hands on experiences for kids and adults.

Our hours will be the same as all other exhibits at the fair. For full details please visit:

sibleycountyfair.com





Place
Stamp
Here

Give **TODAY!**

Support us by visiting,
donating or doing re-
search! We have access to
Ancestry.com

700 Main Street
PO Box 407
Henderson, MN 56044

Phone: 507-248-3434
Email: historicalsociety@co.sibley.mn.us

Help Support us by purchasing *Remembering Country Schools*



To order, simply call our staff at:
507-348-3434 **OR** please down-
load, print, complete, attach pay-
ment, and mail your purchase or-
der to the address on the form
which can be found at: [https://
www.sibleycountyhistoricalsociety.co
m/blank-page-1-1-1](https://www.sibleycountyhistoricalsociety.com/blank-page-1-1-1)

**If shipping is needed, there
will be an additional \$7
shipping and handling
charge per book**

Price (includes tax):

\$27 members

\$33 non members